



Thinking about
Majoring in
Social Work?



Appalachian
STATE UNIVERSITY



Ms. Janice Koppenhaver, SW Academic Advisor
Dr. Rachel Wright, BSW Program Director



Beaver College of Health Sciences



What is Social Work?

- A growing and dynamic field!
- Helps people reach their potential-overcoming personal and environmental obstacles through advocacy, direct practice, and research
- Is a professional degree that you can work with people immediately after graduation
- Prepares you for practice in a variety of health and human services

2020 median pay	\$51,760 per year
Number of jobs, 2020	715,600
Job outlook, 2020-30	12% (faster than average)

From the Council on Social Work Education....

Social workers share a commitment to

- promoting social welfare,
- helping people of all backgrounds overcome their unique challenges,
- advocating for social and economic justice for all members of the community, and
- embodying a professional Code of Ethics

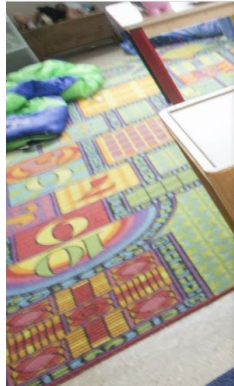
What do social workers do?

- <https://careers.appstate.edu/social-work>

Career Development Center



[STUDENTS](#) [EMPLOYERS](#) [ALUMNI](#) [FACULTY & STAFF](#) [PARENTS & FAMILY](#) [ABOUT](#)

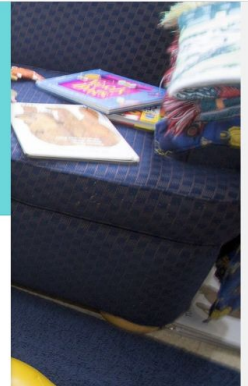


Social Work

What Can I Do In My Major?

Overview

The National Association of Social Workers defines social workers as “people who care about people, who want to make things better, who want to relieve suffering, who want their work to make a difference.” This is a growing and dynamic field, and the U.S. Department of Labor projects faster than average employment growth.



What courses are needed for a social work major?

- Program of Study
- In addition to Gen Ed., Social Work majors take 4 levels of classes:
 - Cognate courses (non-SW courses)
 - “Foundation” level courses
 - “Professional Sequence” level courses
 - Field placement (internship) and accompanying seminar

[Socialwork.appstate.edu](https://socialwork.appstate.edu)



“Undergraduate” Tab



BSW Student Handbook

BSW Academic Standards

Maintain 2.5 overall GPA and 2.5 Social Work GPA

Grades in required cognates and all SW courses
("C" or higher)

Can only repeat **2** SW courses during the major

Can only repeat any specific SW course **once**



Potentially Earn your BSW and MSW in About 5 years!

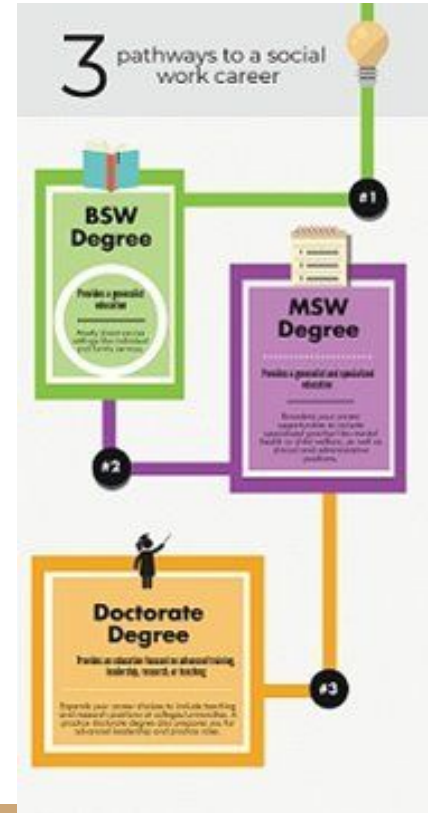
BSW

ADVANCED STANDING (MSW)

* **LCSW-** Licensed Clinical Social
Worker--**REQUIRES** the MSW



Social Workers
FEED THE HUNGRY
SHELTER THE HOMELESS
PROTECT THE CHILDREN
ADVOCATE FOR THE INFIRM
COUNSEL THE DISTRESSED
EMPOWER THE VICTIMS
RESEARCH BEST PRACTICES
INFORM GOVERNMENT
PROTECT THE VULNERABLE
CHALLENGE DISCRIMINATION



What can I expect as a student?

- Class Discussions...often on tough topics
- Writing Papers
- Service Learning
- Making Solo Presentations
- Making Group Presentations
- Group Projects...
- More Group Projects!
- Internship in Final Semester
- And...Fun!



Potential Field (internship) placements

- Public school systems
- The health department
- Guardian ad Litem
- The Children's Council
- DSS
- Public libraries
- Youth programs
- Advocacy organizations
- And many more!

Some Great Aspects of Our BSW...

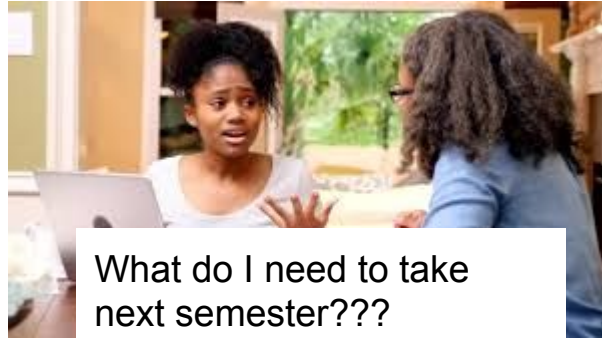
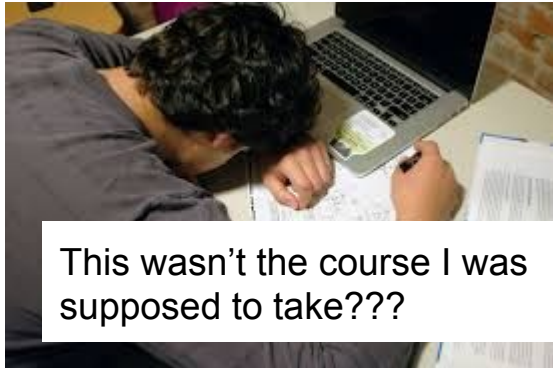
- * Honors Program

- * Social Work Faculty Mentors

- * SASW Opportunities (student club)



Advising



Dedicated SW Academic Advisor.
Ms. Koppenhaver, you're my hero!!

Our BSWs and MSWs want to change the world...AND THEY DO!



Come join us at Appalachian! Be a Mountaineer Social Worker!

Dr. Wright, BSW Program Director
wrightrl@appstate.edu

Ms. Koppenhaver, Academic Advisor
koppenhaverj@appstate.edu

[**socialwork.appstate.edu/faculty-staff**](https://socialwork.appstate.edu/faculty-staff)